

Mike
Dobson



5 Peckfield Rise

Micklefield, Leeds, LS25 4FG

Asking Price £270,000

5 Peckfield Rise

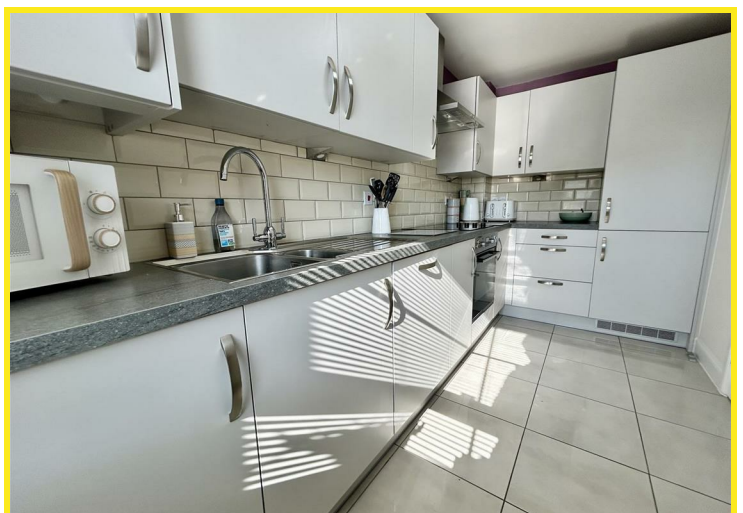
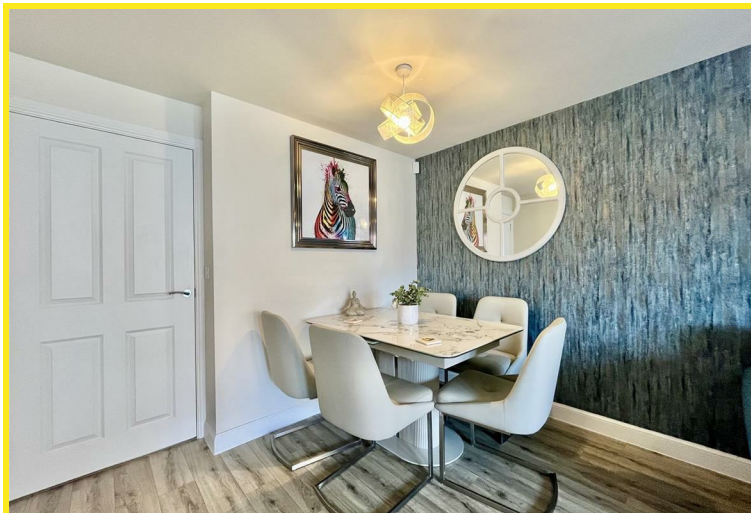
Nestled in the desirable area of Peckfield Rise Micklefield Leeds, this modern townhouse offers a perfect blend of contemporary living and comfort. Built in 2020, this three-storey property boasts three generously sized double bedrooms, making it an ideal home for families or those seeking extra space.

Upon entering, you are welcomed into an entrance hall with the convenience of a down stairs WC, a spacious lounge and dining area, which is bathed in natural light thanks to the French doors that open directly onto the rear garden. This seamless connection between indoor and outdoor spaces is perfect for entertaining or simply enjoying a quiet evening at home.

The fitted kitchen is equipped with a range of integrated appliances, providing both functionality and style for the home chef. The larger than average master bedroom features an en-suite shower room, offering a private retreat for relaxation. The additional two bedrooms are equally well-proportioned, with a Jack and Jill en-suite/family bathroom, ensuring comfort for all occupants. Gas central heating and PVCu double glazing ensure warmth and energy efficiency throughout the year.

This property also includes off-road parking for one vehicle and a single brick-built garage, providing ample room for your vehicles and additional storage. There is a fully enclosed rear garden with a paved patio and lawn perfect for outdoor entertainment.

With its modern design and convenient location, this townhouse is a fantastic opportunity for those looking to settle in a vibrant community. Don't miss the chance to make this beautiful home your own.





Floor Plan

